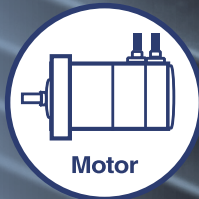


OMNI edge

THK is expanding its ready-to-use IoT service.
Visualize the status of rotary components
to prevent **loss from equipment malfunctions!**

Do you use rotary components
in your facility?



Industrial IoT Service

OMNI edge

Predictive failure detection AI for components

Predictive
failure detection



+

Maintenance
recommendations

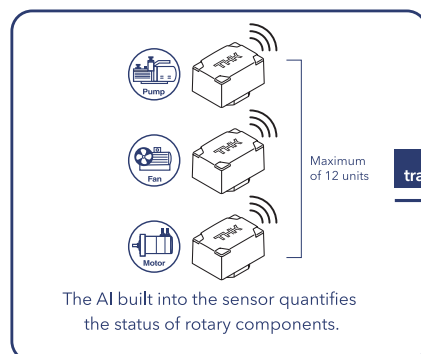


+

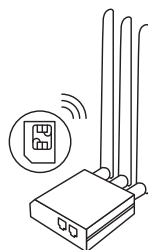
Before-and-after
maintenance reports



The OMNI edge System

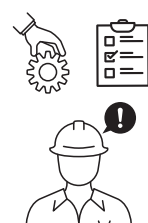


Secure
transmission



AI extracts the feature values
and transmits them over a 4G/LTE network.

Secure
transmission



The AI predicts the failure mode and
provides maintenance recommendations.
It also creates before-and-after
maintenance reports.

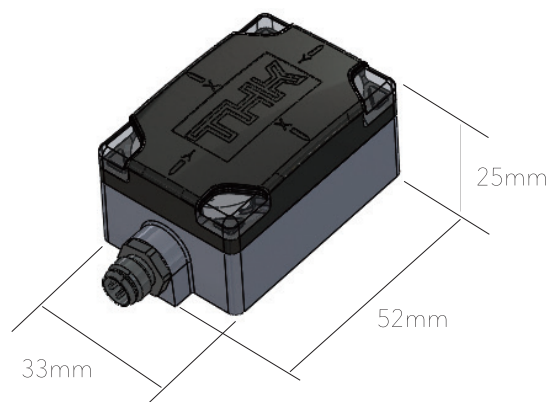
THK

Solve the difficulties of installing, setting up, and operating the IoT with one package.

In the years since the IoT took off, many customers have said they implemented the IoT but can't fully utilize it, or just implementing it would be difficult.

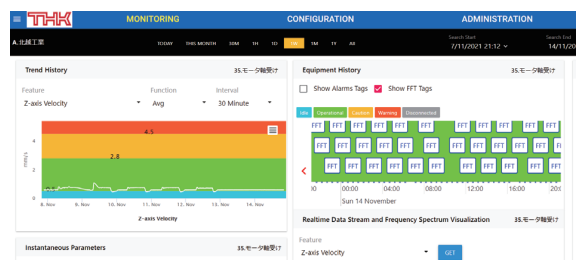
1 The sensor can be retrofit.

With little wiring and no settings required, the sensor can be installed and used right away.



2 You can monitor the status on-site or remotely.

The sensor has an LED display so you can discern the status at a glance when walking around the facility. A web app is also available so you can check online from a remote location.



3 The AI provides maintenance recommendations and before-and-after reports.

The AI analyzes sensor data and calculates a health score.

- No data threshold management required.
- Predicts failure modes.
- Provides maintenance recommendations.
- Creates before-and-after maintenance reports.

